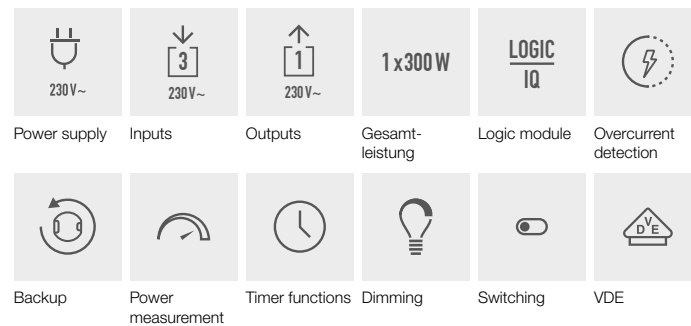


frogDim1-3

Multifunctional 1-channel dimming actuator with 1 output to dim or switch lights on/off and 3 inputs for integration of additional switches and sensors (110-240 V~). Switching and dimming functionality for all approved trailing-edge phase control dimmable lighting; Leading-edge phase control only for inductive load approved. Featuring integrated logic module with comfort and timer functions, power measurement and short circuit detection (1x 300 W @ 230 V~).



Technical Data

Category

Article designation	frogDim1-3
Article	D1-3-300.01
Assembly type	Recess-mounted (in device socket according to DIN 49073)

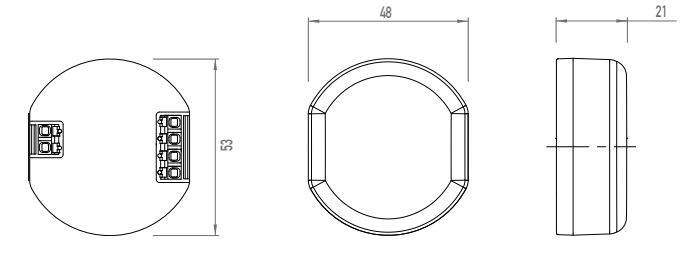
Functions and power

Inputs	3 (AC 110–240 V ~)
Outputs	1 (AC 110–240 V ~)
Outputs dimmable	Yes (phase cutting or phase section control can be switched using the frogblue app; phase cutting is only permitted for inductive loads)
Minimum Load LED	LED 3 W
Maximum Power per output	300W/300VA (220-240V~) 150W/150VA (110-219V~)
Suitable loads	Light bulb load, electronic transformer, inductive load, (no motor load)
Output modes	dimming, switching
Protection category	Conforms to IP20
Integrated logic module	Yes
Integrated configuration backup	Yes
Comfort and timer functions	Yes
Power measurement	Yes
Short circuit detection and notification	Yes

frogDim1-3

Dimensions and weight

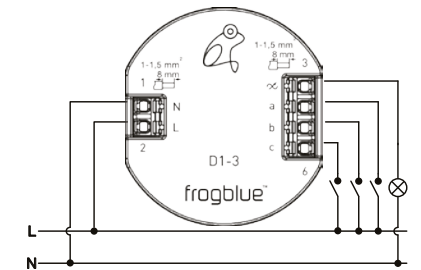
Dimensions (L x B x H): 53 x 48 x 21 mm
Weight: 33 g



Connection example:

Socket depth min. 53 mm for installation behind switch insert
rec. 63 mm for installation behind switch insert

Individual installation is necessary for shallow depths.



Electricity supply

Mains voltage	AC 110–240 V ~
Mains frequency	50 / 60 Hz
Stand-by consumption	< 220 mW

Network

WLAN	No
Bluetooth	Bluetooth 4.2 Low Energy
Frequency range	2400–2483.5 MHz maximum 3.4dBm
Typical radio open field range	30 metres

Operation and storage

Ambient temperature	25 ° to +55 °C
Storage temperature	-25 ° to +70 °C
Air humidity (during operation)	(Non-condensing)

Power connection

Contact type	ε, MOFSET
Connection variants	for bell, lamps, buttons, switches
Connection type	Spring-type terminal (single wire)
Wire cross section	1–1.5 mm ² (rigid conductor recommended)
Stripping length	8 mm
Packaging size	1 unit
EAN 1 unit	4260578530026
Packaging dimensions (L x W x H) 1 unit	75 x 30 x 75 mm
Weight including packaging 1 unit	50 g
Air humidity (during operation)	(Non-condensing)

Note

A relay module (e.g. frogRelay2-2, frogRelay2-2-PF) must be utilised to control motor loads (e.g. roller shutter motor).

frogblue_Data_EN_1-21_D1-3-300.01 01.21

Subject to change.
Electrical equipment may be installed and fitted only by qualified electricians.

Further information
www.frogblue.com.

